

EEA, EEB Series



UL Recognized
CSA Certified
VDE Approved



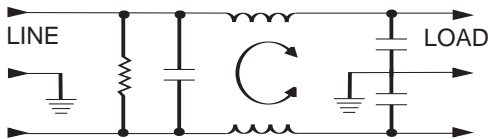
EEA Series

This is a new generation of compact RFI filters with IEC socket. A totally new design in both the internal structure and manufacturing process makes this series cost effective and compact. The EEA series supersedes the EF series by providing superior performance, particularly in the common mode at low frequencies. Mechanically, its slimmer size makes it compatible with all similar filters on the market.

EEB Series

This is a new generation of compact RFI filters with IEC socket. A totally new design in both the internal structure and manufacturing process makes this series cost effective and compact. Electrically, the EEB provides enhanced differential mode performance compared to both the EEA and EF series. Mechanically, its slimmer size makes it compatible with all similar filters on the market.

Electrical Schematic



Resistor location for reference only.

Specifications

Maximum leakage current, each line-to-ground
 @ 120 VAC 60 Hz: .22 mA
 @ 250 VAC 50 Hz: .38 mA

Hipot rating (one minute):
 line-to-ground: 2250 VDC
 line-to-line: 1450 VDC

Operating frequency: 50/60 Hz

Rated voltage (max.): 250 VAC

Minimum insertion loss in dB:

Line-to-ground in 50 ohm circuit

| Current Rating | Frequency-MHz | | | | | | | |
|----------------|---------------|-----|----|-----|----|---|---|----|
| | .01 | .05 | .1 | .15 | .5 | 1 | 5 | 10 |

EEA Models

| | | | | | | | | | |
|-----|----|----|----|----|----|----|----|----|----|
| 1A | 12 | 23 | 29 | 32 | 41 | 47 | 47 | 47 | 40 |
| 3A | - | 10 | 15 | 19 | 30 | 36 | 48 | 50 | 47 |
| 6A | - | 1 | 4 | 10 | 22 | 28 | 42 | 48 | 47 |
| 10A | - | 1 | 3 | 5 | 14 | 20 | 32 | 38 | 47 |

EEB Models

| | | | | | | | | | |
|-----|----|----|----|----|----|----|----|----|----|
| 1A | 12 | 23 | 29 | 32 | 41 | 47 | 47 | 47 | 40 |
| 3A | - | 10 | 14 | 18 | 30 | 36 | 48 | 50 | 47 |
| 6A | - | 1 | 4 | 10 | 22 | 28 | 42 | 48 | 47 |
| 10A | - | 1 | 3 | 5 | 14 | 20 | 32 | 38 | 47 |

Line-to-line in 50 ohm circuit

| Current Rating | Frequency-MHz | | | | | | |
|----------------|---------------|---|-----|---|---|----|----|
| | .5 | 1 | 1.5 | 3 | 5 | 10 | 30 |

EEA Models

| | | | | | | | |
|-----|---|---|----|----|----|----|----|
| 1A | 1 | 9 | 19 | 32 | 42 | 45 | 40 |
| 3A | 2 | 4 | 6 | 20 | 35 | 45 | 40 |
| 6A | 2 | 4 | 6 | 6 | 24 | 40 | 40 |
| 10A | 1 | 4 | 5 | 5 | 5 | 30 | 40 |

| Current Rating | Frequency-MHz | | | | | | |
|----------------|---------------|-----|----|---|---|---|----|
| | .01 | .15 | .5 | 1 | 3 | 5 | 10 |

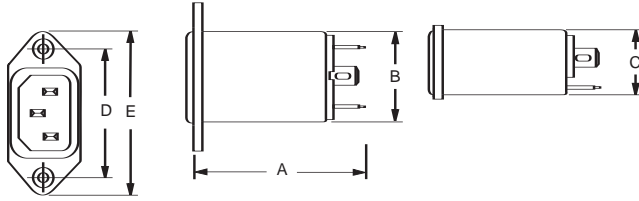
EEB Models

| | | | | | | | | |
|-----|---|---|----|----|----|----|----|----|
| 1A | 1 | 3 | 14 | 23 | 41 | 47 | 50 | 44 |
| 3A | 1 | 2 | 11 | 14 | 25 | 38 | 44 | 40 |
| 6A | 1 | 2 | 10 | 14 | 20 | 33 | 42 | 40 |
| 10A | 1 | 2 | 10 | 16 | 19 | 19 | 39 | 40 |

EEA, EEB Series

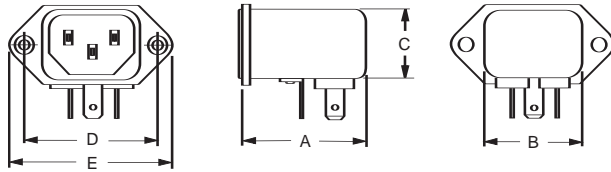
Case Styles

EEA1/EEB1 (front or back mounting)

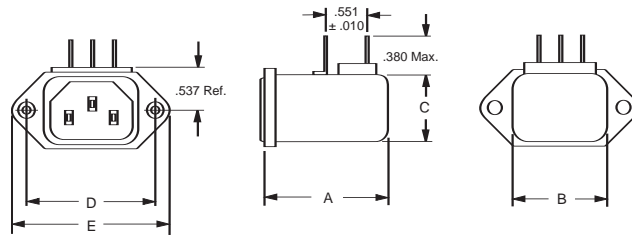


Typical dimensions:
 Terminals: .250 [6.35] (3) Holes: .07 [1.8] Dia.(2) Slot: .07 x .16 [1.8 x 3.8] (1)

EEA2/EEB2 (back mount only)

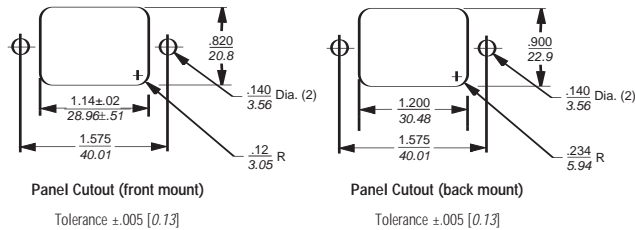


EEAP/EEBP (back mount only)



Typical dimensions:
 Mounting holes: .132 [3.35] Dia. (2) with .260 Dia. x 90° countersunk for #4 Flathead Screw.

Recommended Panel Cutouts



Case Dimensions

| Part No. | A (max) | B (max) | C (max) | D $\pm .010$ $\pm .25$ | E (max) |
|----------|--------------|--------------|--------------|---------------------------|--------------|
| EEA1 | 2.15 54.6 | 1.12 28.4 | 0.81 20.6 | 1.575 40.01 | 1.98 50.3 |
| EEA2 | 1.54 39.1 | 1.12 28.4 | 0.81 20.6 | 1.575 40.01 | 1.98 50.3 |
| EEAP | 1.54 39.1 | 1.12 28.4 | 0.81 20.6 | 1.575 40.01 | 1.98 50.3 |
| EEB1 | 2.15 54.6 | 1.12 28.4 | 0.81 20.6 | 1.575 40.01 | 1.98 50.3 |
| EEB2 | 1.54 39.1 | 1.12 28.4 | 0.81 20.6 | 1.575 40.01 | 1.98 50.3 |
| EEBP | 1.54 39.1 | 1.12 28.4 | 0.81 20.6 | 1.575 40.01 | 1.98 50.3 |

Part Numbers

| | |
|--------|--------|
| 1EEA1 | 1EEB1 |
| 1EEA2 | 1EEB2 |
| 1EEAP | 1EEBP |
| 3EEA1 | 3EEB1 |
| 3EEA2 | 3EEB2 |
| 3EEAP | 3EEBP |
| 6EEA1 | 6EEB1 |
| 6EEA2 | 6EEB2 |
| 6EEAP | 6EEBP |
| 10EEA1 | 10EEB1 |
| 10EEA2 | 10EEB2 |
| 10EEAP | 10EEBP |

Line Cord No. GA400
 Insulating Boot No. FA601

EEAP/EEBP Model PCB Layout

